

Prospectus
of
Boone, Iowa

April, 1931

PROSPECTUS
OF
BOONE, IOWA

Prepared under the Direction
of
A Committee of the
Boone Chamber of Commerce

JW Linbaugh
Chairman

April, 1931

TABLE OF CONTENTS

Articles

Page

Boone, Iowa (General) - - - - -	7
Water Supply and Sewage Disposal- - - - -	13
Coal Supply - - - - -	17
Electric and Gas Service- - - - -	21
Transportation Facilities - - - - -	25
Living and Housing Conditions in Boone- - - - -	29
Park and Camps- - - - -	33
Banks - - - - -	37
Churches and Schools- - - - -	41
Military Achievements of Boone- - - - -	45
Health and Sanitation - - - - -	49
Labor - - - - -	51
Boone's Sites for Veterans' Hospitals - - - - -	53

Views

Swedish Old Peoples Home- - - - -	5
Eastern Star Home - - - - -	5
Business District - - - - -	5
Public Library- - - - -	6
Post Office - - - - -	6
Court House - - - - -	6
Business District - - - - -	9
High School - - - - -	10
Y. M. C. A. - - - - -	10
Business District - - - - -	10
Boone from the Air- - - - -	11
City Water Works- - - - -	12
Sewage Disposal Plant - - - - -	12
Des Moines River- - - - -	15
Des Moines River Valley on Lincoln Highway- - - - -	15
Coal Mines- - - - -	16
Business District from the Air- - - - -	19
Achievement Parade- - - - -	19
Gas Plant - - - - -	20
Electric Plant- - - - -	20
Chicago & Northwestern Ry. Depot and- - - - -	23
Tracks East of Boone- - - - -	23
Fort Dodge Des Moines & So. R. R. Depot - - - - -	24
Boone Viaduct C. & N. W. Ry. Co.- - - - -	27
Boone Air-Port - - - - -	27
Residence Street- - - - -	28
Holst Hotel- - - - -	28
Residence Street - - - - -	28
Ledges State Park- - - - -	31
City Park Boone - - - - -	31
McHose Park - - - - -	32
Ledges State Park - - - - -	32

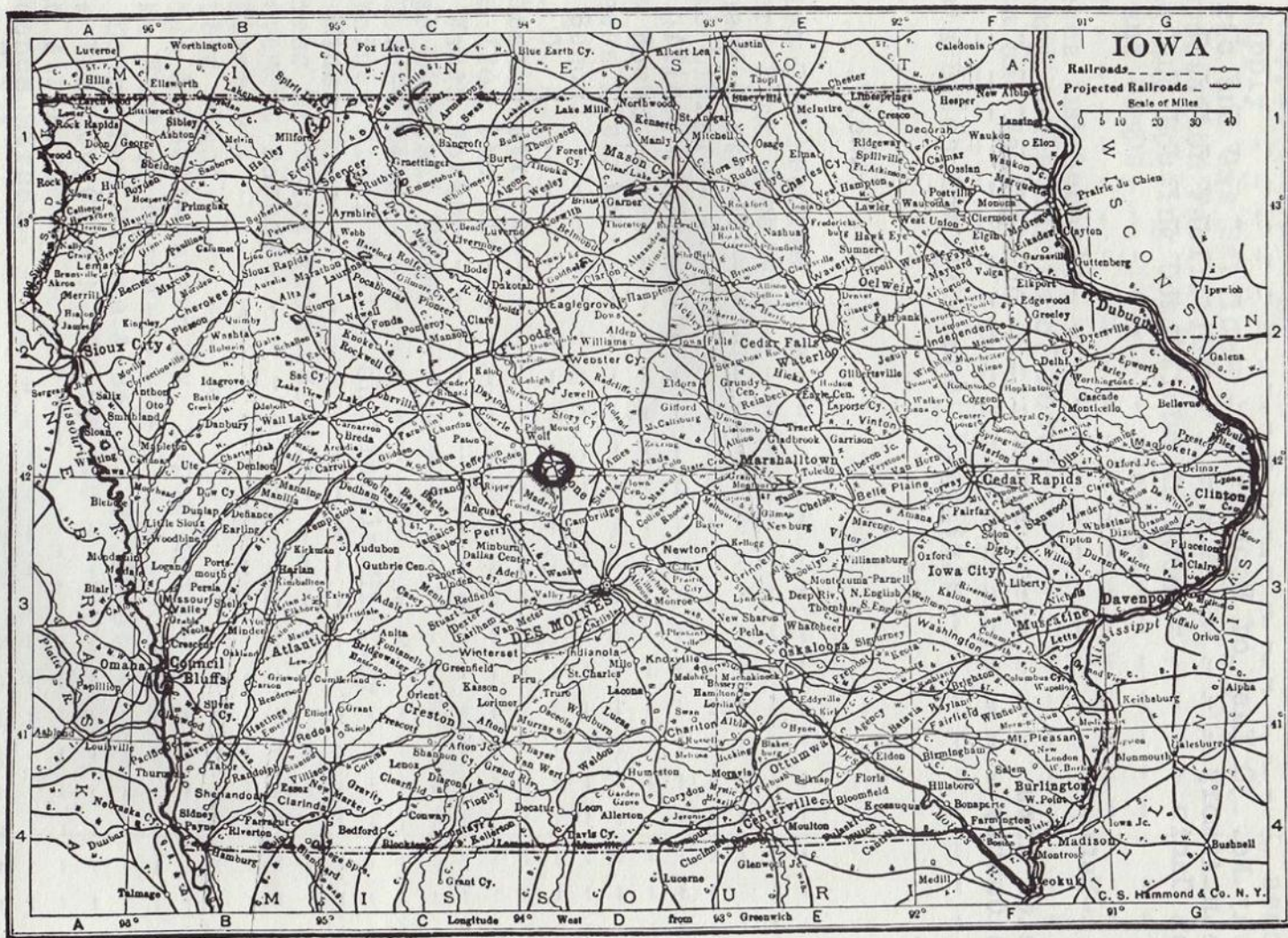
TABLE OF CONTENTS

(Page 2)

	Page
Herman Park- - - - -	32
Ledges Park-- - - -	35
Bank Buildings - - - - -	36
Ledges Park - - - - -	39
Churches - - - - -	40
Highway No. 30 East of Boone - - - - -	43
Lincoln Armory - - - - -	44
Legion Cabin - - - - -	44

-Maps-

State of Iowa - - - - -	4
Boone County - - - - -	52





Swedish Old People's Home



Eastern Star Home



Story Street



Ericson Library



U.S. Post Office



BOONE, IOWA

Boone is an ideal place for state and national institutions, as is evidenced by the fact that we already have here the national Swedish Old Peoples' Home and the State Order of Eastern Star Masonic Home. It is centrally located in the state--nearest the center of populous cities--and is served by three lines of railroad. It is on the Lincoln Highway.

The public facilities of water, gas, electric light and power are unexcelled. Our water supply comes from deep and inexhaustible wells on the Des Moines river.

Boone is very completely paved, has nearly 50 miles of water mains and sanitary and storm sewers. It has adequate fire protection, including two separate stations a mile and a half apart.

Boone has many parks, including a beautiful quarter of a section park bordering on the city. It is only six miles from the famous Ledges State Park.

Boone is the county seat of Boone County and is the home of hospitable people. Its American Legion and Veterans of Foreign Wars and their auxiliaries are especially active in social affairs. Battery A, 185th Field Artillery, Iowa National Guard, with its million dollar plant, is also located in Boone, requiring the presence of many reserve officers.

Boone has splendid stores, capable of furnishing the demands of any institution, home or hospital on instant notice. The population of Boone is 12,000, and its property value nears the \$10,000,000 mark.



Boone Business District



Boone Business District



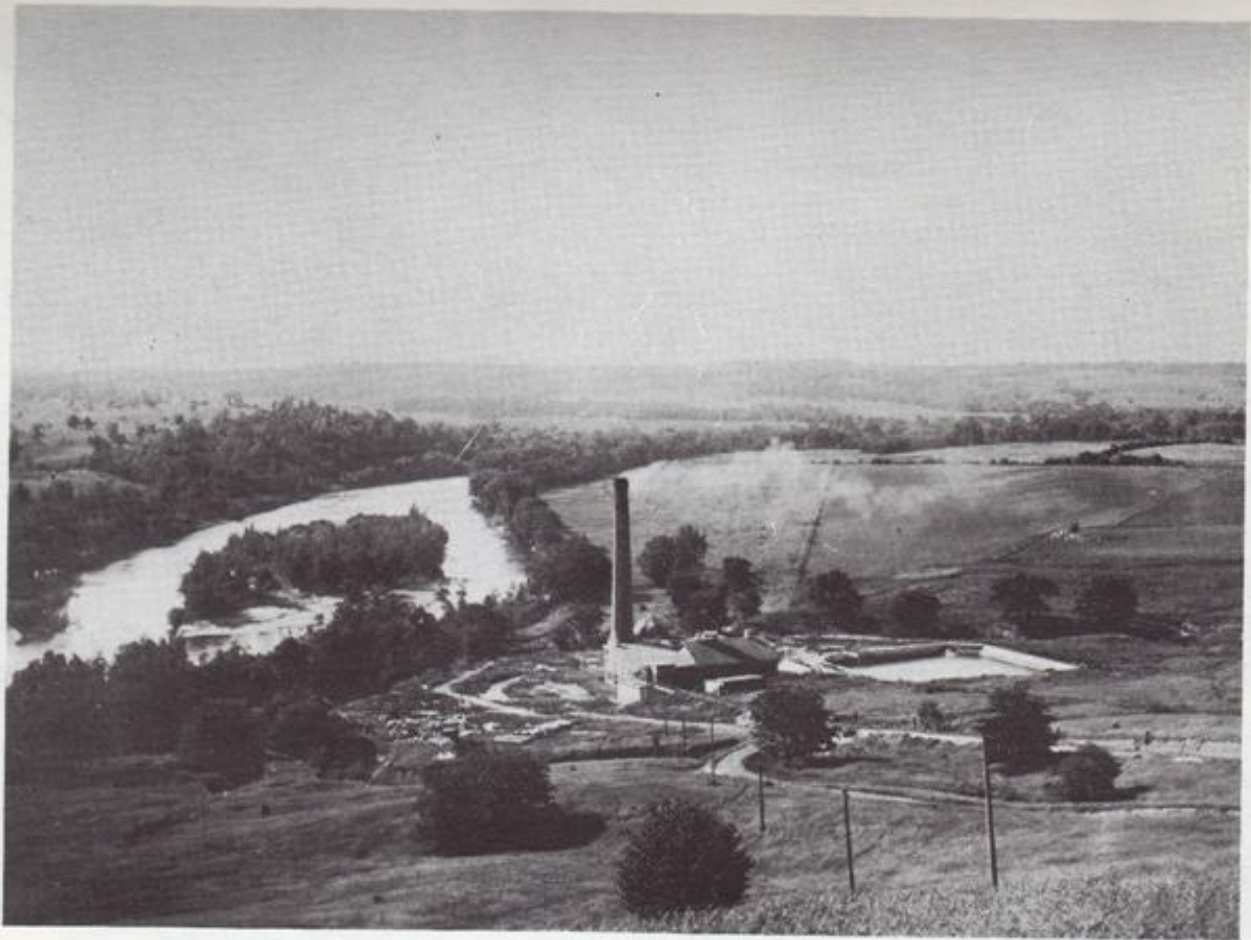


Boone High School

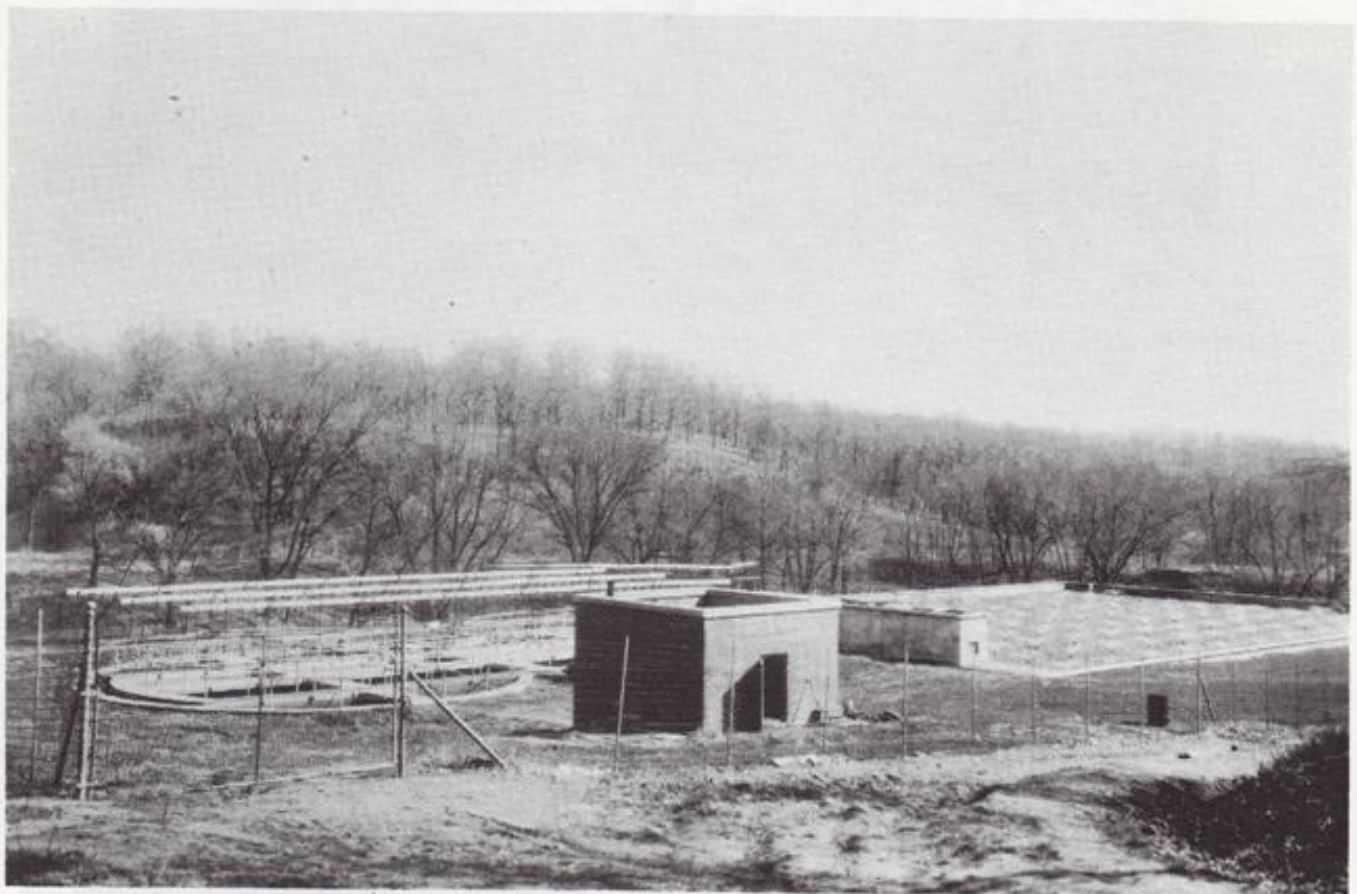


YMCA -Armory Building





City Water Works



Sewage Disposal Plant

WATER SUPPLY

Boone is fortunate in that nature provided a gravel filter basin on an island in the Des Moines river, about four miles northwest of the city, from which an abundant supply of pure clear water of high quality is obtained. The city wells are located in this gravel deposit and the river water filtering into the wells provides an ideal water system.

The pumping station located near the river is equipped with the most modern type of electrical pumping equipment, with a steam auxiliary plant held in reserve.

A large concrete storage reservoir is maintained for emergency near the business district, and a modern elevated steel tank provides ample water pressure in the distribution mains for domestic purposes.

The purity of the water is insured at all times by daily tests at the source of supply.

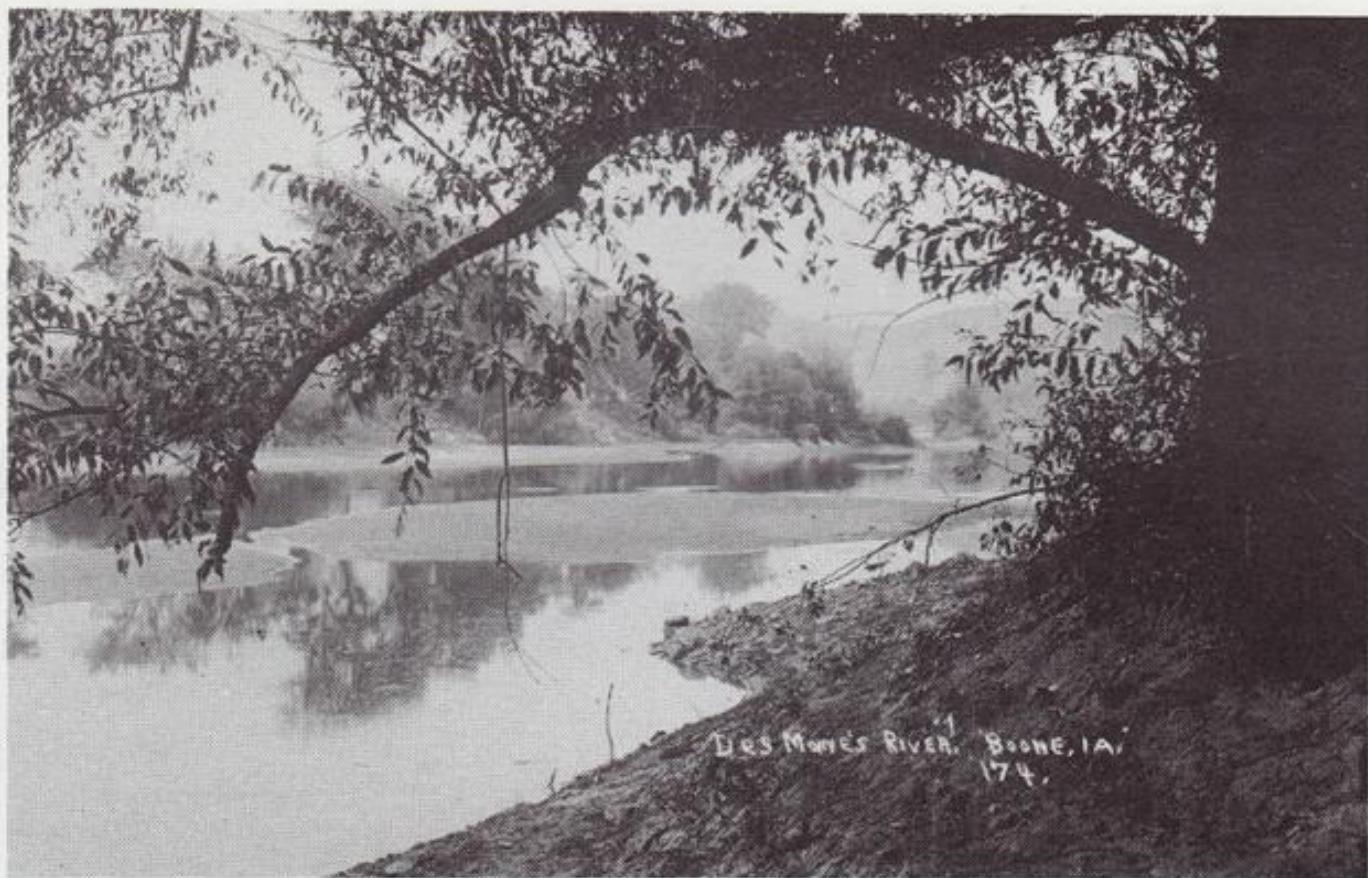
The pumping equipment at the river station has a combined capacity of 5,880,000 gallons per day.

All water used in the local shops and train service of the Chicago and Northwestern Railway Company, which amounts to 650,000 gallons per day is supplied by the City Water Works.

The distribution system consists of forty-one and one-half miles of cast iron mains ranging in size from two inch to fourteen inch, and fire protection is provided by four hundred thirty-six hydrants.

Boone was one of the first cities to respond to the state-wide drive to prevent stream pollution, and a new \$100,000 disposal plant was completed in 1927. This plant has ample capacity to meet the needs of a city double the size of Boone.

Fire protection is provided by the best of motorized fire fighting equipment, manned by a well trained paid fire department augmented by a large force of volunteer firemen. Two fire stations are maintained, and all equipment is kept up to standard at all times.



Des Moines River





Coal Mines



COAL SUPPLY

The coal mines located at Boone, Iowa, produce four hundred to five hundred tons of coal per day. However, if necessary the production could be increased to eight hundred or nine hundred tons per day as the occasion would demand.

The coal mines here will test twelve thousand to thirteen thousand B. T. U's per pound which compares very favorably with other coal mines within the State.

We find upon investigation that enough coal is left in Boone territory to last fifty years, at the present rate of consumption. However, there is enough coal within five miles of Boone to last several hundred years by taking the present output into consideration.

Coal has been mined in this field for the past sixty years. Boone coal is being sold at a very low figure and could no doubt be purchased at a much lower figure if bought in large quantities.

Therefore, it is evident that sufficient coal at low cost is available from the mines at Boone for institutions and industries located here and would be a decided advantage to such projects as consume coal in any quantity.



Business District from Air



Achievement Parade



Gas Plant



ELECTRIC AND GAS SERVICE

At Boone the Iowa Railway & Light Corporation maintains a large modern electric generating station of 6000 kilowatts capacity, which furnishes electric service to Boone and many important towns and industries by means of transmission lines radiating out into some nine Iowa Counties.

This station is connected by transmission lines to other large modern plants of the Corporation located at Marshalltown and Cedar Rapids as well as auxiliary plants located at Nevada, Perry, Jefferson and Coon Rapids so that a supply of electrical energy is available from several sources.

This insures a reliable and dependable power supply at all times and the large output permits low and attractive rates to be made, which is evidenced by the fact that large consumers, such as the Chicago & Northwestern Railway with large shops and round house at Boone, the City of Boone Water Works, the coal mines and other industries in Boone and the territory served from Boone secure their power from the electric generating plants of the Iowa Railway and Light Corporation rather than operate plants of their own.

This Utility also has located at Boone a large modern and well equipped gas plant and pumping station which serves not only the City of Boone but also the cities of Ames and Nevada through a recently constructed gas transmission line some twenty-five miles in length.

This gas transmission line also furnishes the Iowa State College at Ames with all the gas required for the various uses of an institution with an enrollment of four thousand students.



Chicago and Northwestern RR Depot





Fort Dodge, Des Moines & So. R.R. Depot

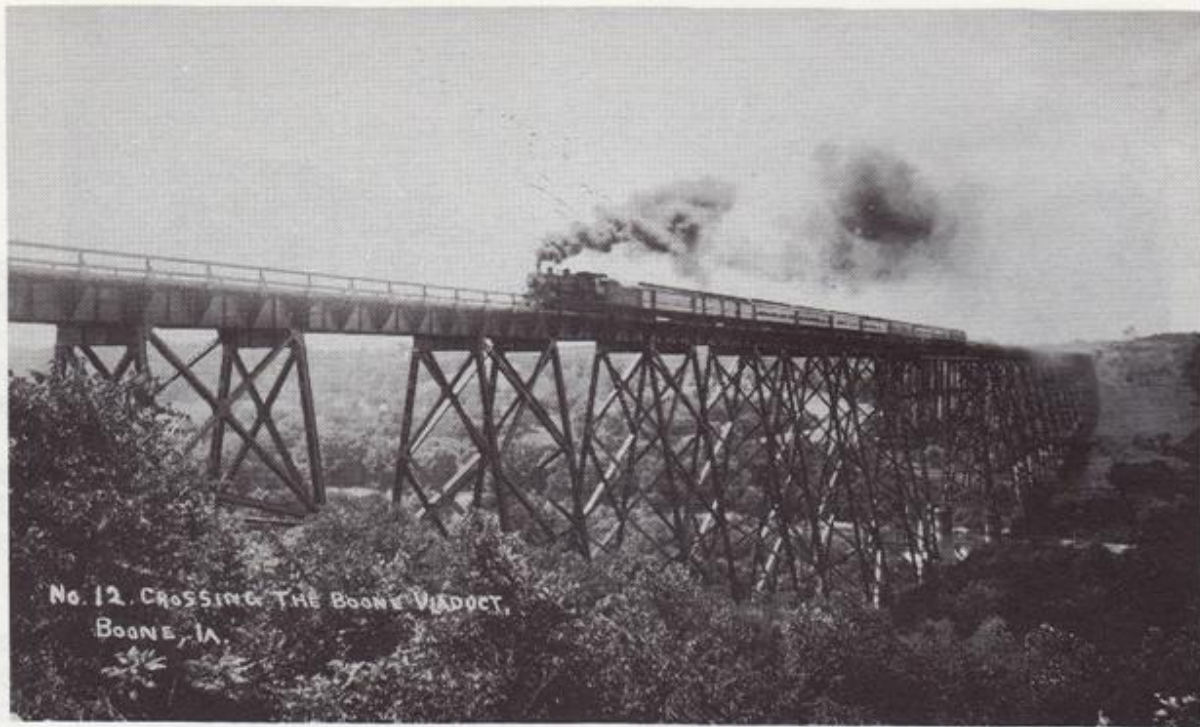
TRANSPORTATION FACILITIES

Boone enjoys exceptional advantages in the field of transportation. This holds true whether railroad service or motor transport is contemplated.

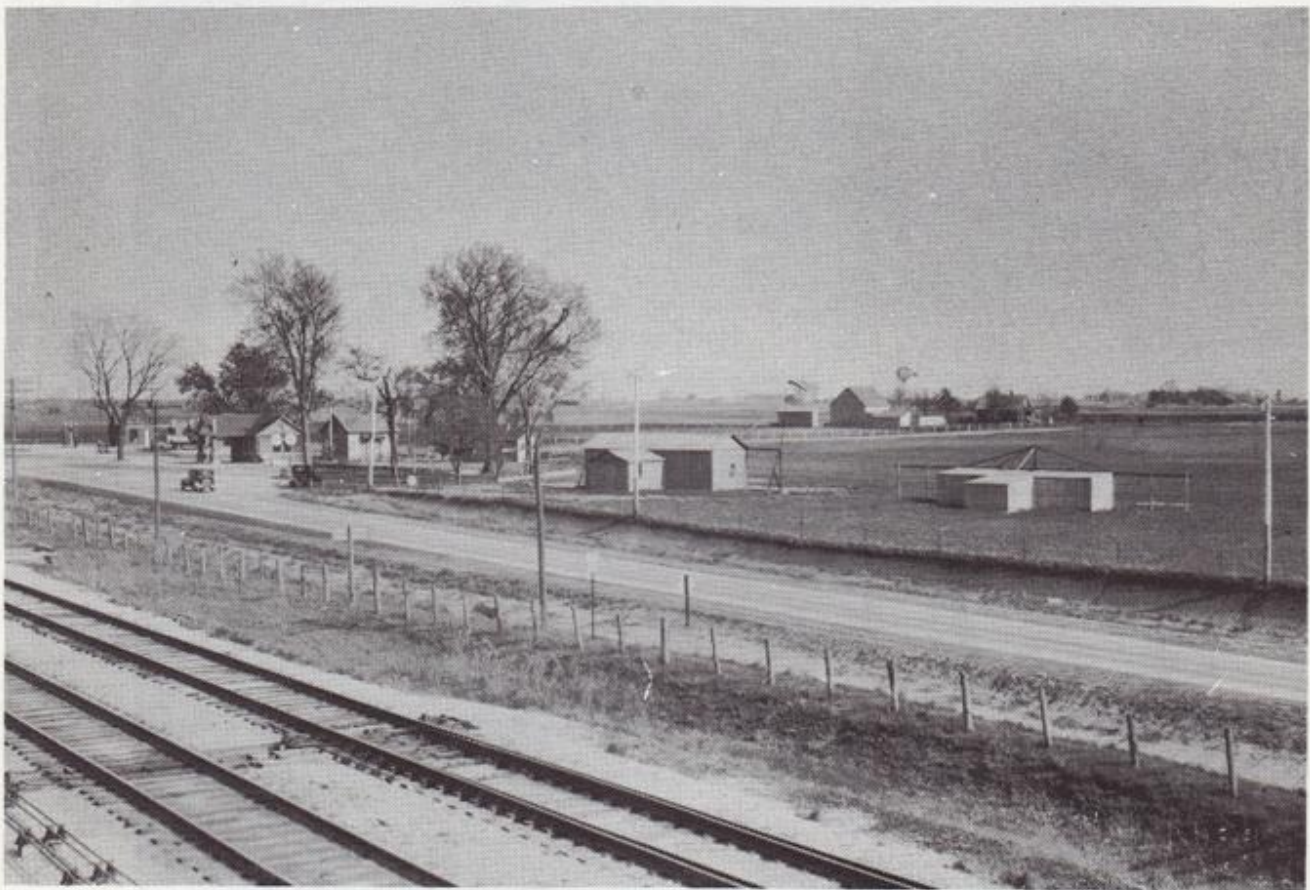
In the case of rail service, all of the trans-continental trains as well as the local trains of the Chicago and Northwestern Railway stop at the station of this company in the heart of the city. The electric trains of the Fort Dodge, Des Moines & Southern traverse the territory to the north and south, connecting with all but one of the trunk lines operating in Iowa. A branch of the Milwaukee Railroad enters the city from the south. The stations of the two latter companies are also centrally located.

As to motor transport, Federal Highway #30 - The Lincoln Highway - passes through, the route being in a location convenient to the hotels and business section. This highway is now completely paved across the state from east to west. Federal Highway #169 is located across the county from north to south west of the city, and will be paved at least in part during 1931. Iowa road #60, also across the county from north to south, is located immediately east of the city, and is paved across the southern half of the county. In addition to these, there are many miles of well maintained gravel roads throughout the county which are all-weather routes that make the city easily accessible from every point. These highways are available not alone for private motors, but are used by both trans-continental and local buses, so that it is possible to reach the city from every direction by bus.

Boone citizens are justly proud of the transportation facilities of their city. The service available cannot be excelled and is rarely equaled.



Boone Viaduct C&NW



Boone Airport



So. Boone Street



Holst Hotel



LIVING AND HOUSING CONDITIONS IN BOONE

First, with regard to health, statistics prove that Boone stands very near the top of the cities in Iowa in the matter of health and is indeed the healthiest city of its size in the state. It is getting healthier. According to the official figures of the health officers, there were 145 less cases of contagious diseases in quarantine in 1929 than in 1928. The location of Boone on high ground, but with an inexhaustible supply of water from spring wells in the Des Moines river makes living conditions with regard to health the best possible.

At the present time there are many good modern houses available for transients. The last two or three years has seen the completion of several down town apartments to which people seem to have moved, leaving good residences ready for occupancy. There are also a few apartments, steam heated and with all modern conveniences to be had.

Boone has a very high grade of school advantages, with its well equipped high school, Junior High School and Junior College. Credit marks from these institutions are recognized in all higher institutions of learning to which the pupils of any like institution in the country are accredited.

Practically every denomination is represented by churches and church edifices in Boone, all with good congregations and pastors and with Sunday School and young peoples' associations. There is a strong Y. M. C. A. and Y. W. C. A., both occupying their own buildings.

The physical welfare of children is cared for by all the advantages of gymnastics and outdoor exercise, both the Y. M. C. A. and the schools being excellently well equipped in this respect. The free park system in Boone includes one very large park on the outskirts of the city and several small parks, in most of which there is a baseball diamond. The high school is equipped with its football field and all in all no more ideal advantages can be afforded to the youth than those which exist in the city of Boone.

Socially, Boone is probably more abundantly equipped with clubs, lodges and orders than any city of its size in Iowa. People coming here to live always find it agreeable and are loath to move away. One thing that Boone can unreservedly promise is not only the best of living and housing conditions, but also that friendly and cordial treatment which strangers so ardently desire when going into a new community.



Ledges State Park



Ledges State Park

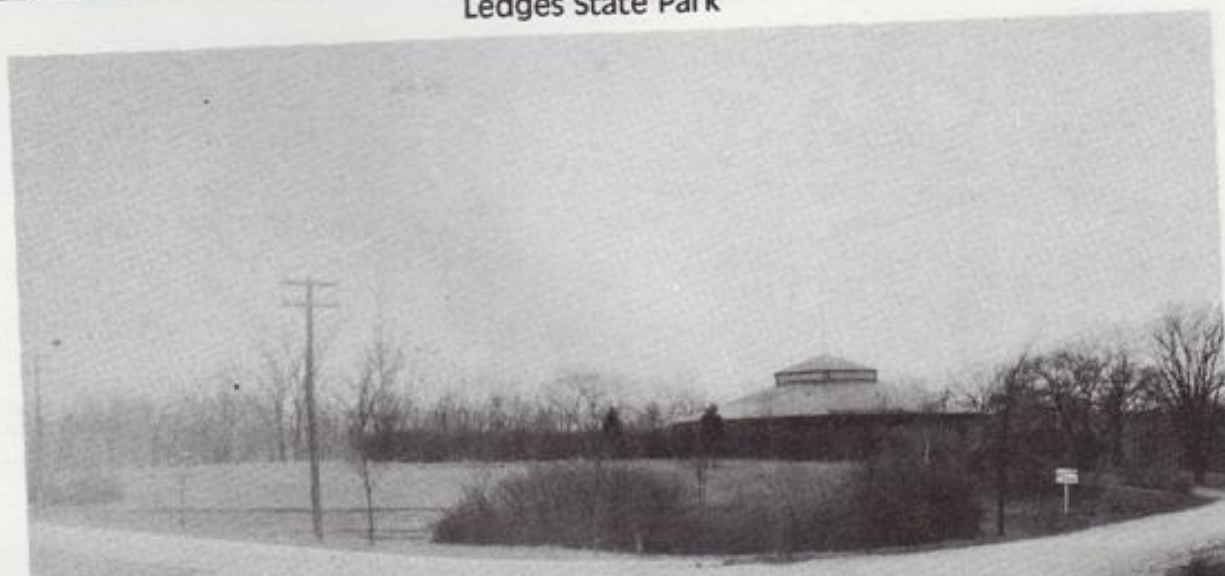




McHose Park



Ledges State Park



PARKS AND CAMPS

The scenery along the Des Moines River Valley is most beautiful, and Boone County contains the finest and most rugged portions of it--high bluffs, luxuriant timber, deep ravines, etc., make it a favorite location for parks and camps. The Ledges State Park is just south of Boone---a wonderful recreation area of over six hundred acres, which every season draws thousands of visitors from this state and from many other states in the union. The young people for miles around, including Des Moines, have established camps along the river near Boone; the Y.W.C.A., the Y.M.C.A., the Camp Fire Girls, etc., as this region is particularly noted for health and beauty.

The City of Boone is very proud of its system of city parks, the largest being a beautiful tract of woodland comprising over two hundred acres, known as Herman and McHose Parks. Picnic tables are scattered throughout and all forms of outdoor recreation provided for and encouraged. Interesting trails lead up and down the ravines and along the winding bed of Honey Creek, and gravel roads make the entire area available to all.

A fine municipal swimming pool is just being built in this area, and will be completed by June.

Another park that Boone cherishes is the size of two city blocks on the north side of the city. It is called Memorial Park, in memory of those who lost their lives in the World War, and is directly across the street from the Legion Log Cabin. Trees have been planted around and within this area bearing the name, rank and company of those who are gone, but not forgotten. This is a favorite play-ground for young and old--from kite-flying to baseball--according to season--and makes a beautiful setting for the Legion Cabin.

Another small park, City or Blair Park, is in the heart of town, and with its fountain, benches and shade trees, makes a pleasant spot in which to rest and linger.



Ledges State Park





FIRST
NATIONAL
BANK



BOONE
STATE BANK



FARMERS
STATE
BANK



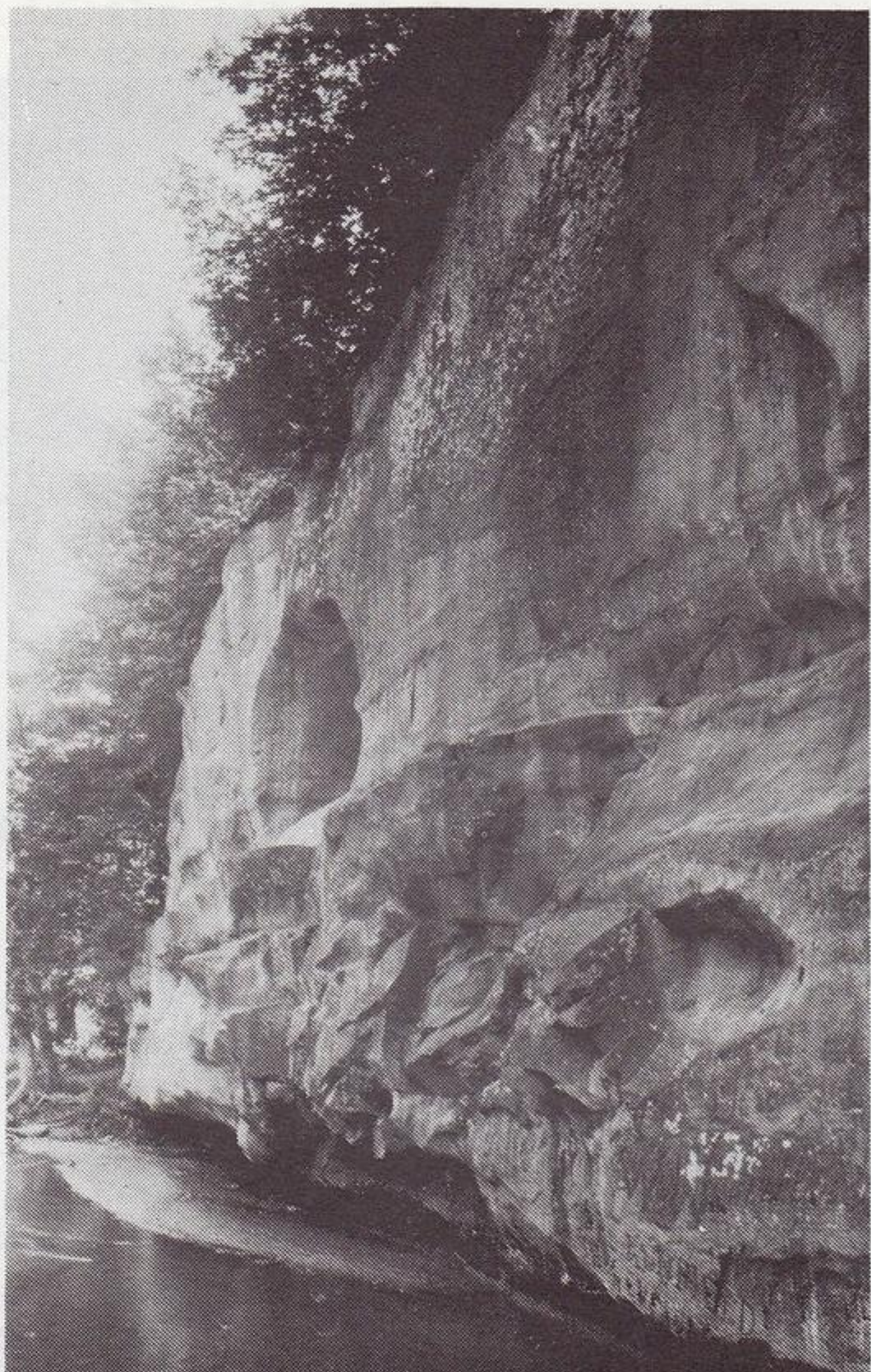
SECURITY SAVINGS BANK



CITY TRUST BANK

B A N K S

Service for the financial business of the City of Boone is provided by two banks. One State Bank and one National Bank. Both banks were organized subsequent to the bank moratorium of March 4, 1933, are sound institutions and afford the City ample banking facilities.





FIRST M.E.



BAPTIST



PRESBYTERIAN



SWEDISH



SACRED HEART



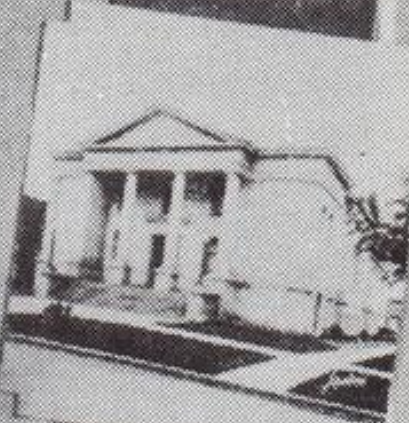
SWEDISH LUTHERAN



CHURCH OF CHRIST



EPISCOPAL



TRINITY EV. LUTHERAN

CHURCHES AND SCHOOLS

Practically every denomination is represented with a fine church edifice in Boone. The churches are an important factor in the life of the community, being a source of much of the social activity as well as the center of the religious program here.

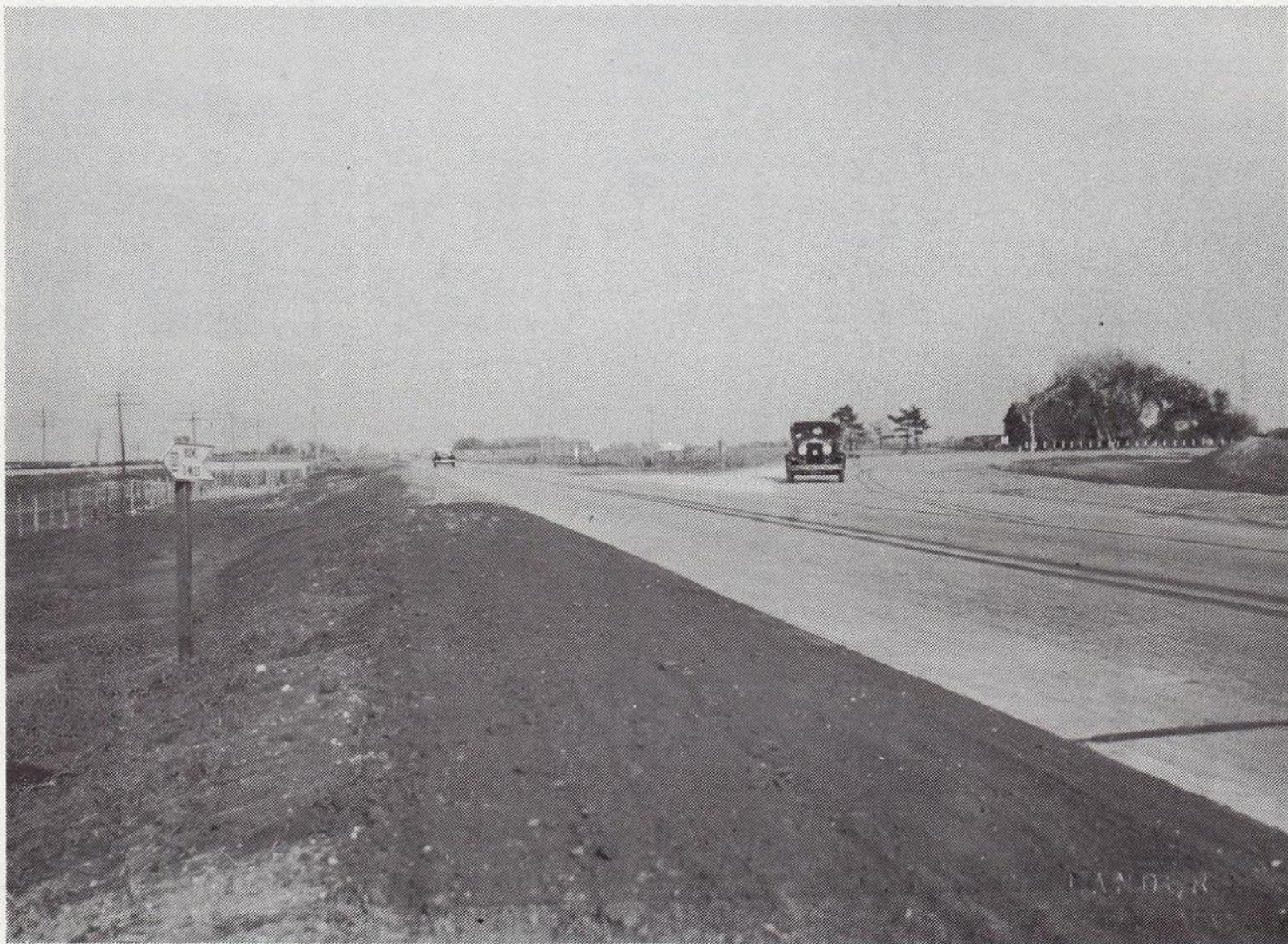
There are church homes for the Methodist, Presbyterian, Episcopal, Christian, Baptist, Catholic, German and Swedish Lutheran, Swedish Mission, Universalist, Primitive Methodist, Latter Day Saints, Salvation Army, and Union Gospel Mission denomination. A number of the churches are of a high class of architecture. There are also a Christian Science Society, a Gospel Tabernacle, and a Midway Tabernacle which have many adherents. The church societies are active and the young people's organizations give a congenial meeting place for the younger Christian residents of the city.

Boone has also Y. M. C. A. and Y. W. C. A. buildings which carry on their good work among the men and women, boys and girls.

The Boone schools are regarded everywhere as among the best in the state. Approximately 2,800 pupils are enrolled in the public schools and over 500 pupils are in the parochial schools. The public schools include seven ward buildings, a junior-senior high school, organized on the 6-3-3 plan, and a junior college. There are also three parochial schools, two of which maintain a high school department.

The program of the Boone schools has a wide scope, placing proper emphasis on and giving due attention to Physical, Intellectual, Moral and Citizenship training. The Culture Ideal, which tends toward class distinction, has been displaced by the Service Ideal, which leads toward unity and cooperation.

Thus it is no longer Culture but Service that is being placed in large letters above the doors of our schools today--service rendered by the schools to the masses of boys and girls who come within its portals--and the same ideal of service instilled into the minds and hearts of these boys and girls that they in turn may justify their education in the service they render.



Highway 30 East of Boone



Lincoln Armory



Legion Cabin

MILITARY ACHIEVEMENTS OF BOONE

Since Iowa became a state in 1846, Boone has responded with a military organization to every call of the President. In the Civil War a full company, Company D, 32nd Iowa Volunteers, served the entire period of the war. Shortly afterwards a company called the Lincoln Guards was organized under James Rush Lincoln, who later became brigadier-general of Iowa and served during the Spanish American and World Wars. This organization was one of the first to affiliate with the Iowa National Guards and Boone has maintained one or more national guard units since that time. Company I, 4th regiment, Iowa National Guards of Boone served throughout the entire Spanish war. Boone supported the First Separate Company, Iowa National Guards, which consolidated with Company I, 2nd Iowa Infantry from Ames, serving in the call for the Mexican border service. The day war was declared with Germany a volunteer company, called First Separate Company, Iowa National Guard, organized and recruited, responding with full strength to the call and mustered into federal service July 15, 1917.

During the World War Boone furnished some 600 men and officers for war service, in addition to the volunteer company. Of the ten physicians in Boone when war was declared five answered the call and served throughout the war. Fifteen nurses enlisted from Boone for service in the World War.

FIVE SERVICE MEN'S ORGANIZATIONS

Boone has five service men's organizations, comprising 500 or more members, as follows: two G. A. R. posts; one Spanish War Veterans camp; one American Legion post and one Veterans of Foreign Wars Post.

The United Spanish War Veterans is the senior ex-service men's organization in Boone comprising a 100% membership of 47 members, several of whom are at present serving in a state or national capacity in the U.S.N.V.

Connected with the Spanish War Veterans Camp is a Ladies Auxiliary.

The American Legion, Arthur D. Lantz Post, No. 56, organized in July 1919, has a membership of 215. It has strong auxiliary organizations including the "40 & 8" and ladies' auxiliary units.

Francis Steele Post, No. 817, Veterans of Foreign Wars, has 241 members and is one of the strongest V. F. W. Posts in the state. Its auxiliary has a large membership and the Post is very active in community work, especially the relief of the needy and help to charitable organizations.

NATIONAL GUARD UNITS

There are five units of the 185th Field Artillery, Iowa National Guard, stationed at Boone. These are: Second Battalion Headquarters, consisting of 4 officers; Headquarters Battery and Combat Train, Second Battalion, consisting of 3 officers and 27 men; Service Section, Service Battery, consisting of 5 officers and 39 men; Band Section, Service Battery, consisting of one warrant officer and 24 bandmen, and Battery "C", consisting of 4 officers and 63 men.

One lieutenant-colonel and one medical officer of the regiment are stationed in Boone. The headquarters of the above units has been called Boone's million dollar plant and is housed in an Armory and gun shed, with 26,100 square feet of ground floor surface and 3200 square feet of office space upstairs, besides an ample basement. Material of the units include 4-155 millimeter howitzers, 13-5 ton tractors, 8 Caissons, 2 Reel Carts, and a number of trucks, motors of various sizes. For the upkeep of this material, ample machine shop facilities exist. Sufficient equipment, such as small arms, field telephones, wire, fire control instruments, etc., is on hand for the training of the authorized personnel.

Boone has been especially energetic and patriotic in furnishing men for any service required by the government, and is still furnishing more than her share for national guard service.

HEALTH AND SANITATION

The City of Boone is located near the Des Moines River which gives an unlimited supply of city water which is approved by the State Board of Health, and has a modern sewage disposal plant which is adequate for the needs of a city of several times its present population.

The elevation is eleven hundred feet, and health conditions have been excellent as shown by a report from the State Board of Health. During 1930 a total of 19623 cases of contagious disease were reported for the State of Iowa of which 561 were accounted for in Boone and Boone County, with no cases of Diptheria, 3 of Typhoid fever, 4 of Whooping cough and 5 of Small Pox, while 10 cases of tuberculosis were reported during the year.

Boone has not depended wholly upon its great natural health resources, but has used science in the protection of its milk supply, its up to date sewerage disposal plant, the development of its water system. In its health campaign the children are its prime interests. Campaigns against small pox, diptheria and communicable diseases are in the yearly program of the school nurse. Medical inspections, home visits and health education are conducted regularly. The County Medical Society is progressive in its desire to maintain a high standard of professional service to the community, utilizing every opportunity to cooperate with specialists and state organizations in the development of clinics; as for the tubercular care. The County Hospital because of its efficient management and personal service has long won the faith and pride of the citizens.

Boone is active and progressive in its ideals, and has always been willing to learn from science and the experience of others. Because of this willingness of spirit, Boone is a healthful, happy and safe community, inviting all to share its old slogan, "Try Boone and You'll Stay."

LABOR

The location of Boone places it in a very enviable position as far as labor is concerned. The supply is drawn from a territory that is made up of the very best people. They are steady, industrious and above the average intelligence of the ordinary labor found in larger centers and are able to readily adjust themselves to the varied lines of industries. Factories here are more than pleased with the labor conditions and have found it easy to obtain the right kind who quickly become efficient in a very short time.

Boone does not draw its labor supply from large cities, but from the smaller communities in its immediate vicinity. Boone itself can furnish an excellent class of both common and skilled workers.

Labor turnover here is very light as reported by industries located here. Some factories have built up their organization from labor in the community, as they have found the workers able to adjust themselves to conditions and more interested in steady employment than a shifting from one job to another. This speaks well for the class of labor here and it appears the individual worker is interested in identifying himself with concerns where the work might be more or less permanent.

Many of the workers own their own homes and are therefore much more interested in their community than would otherwise be the case. Labor is encouraged along this line which has done much to make conditions here very satisfactory.

Industries interested in a location where a supply of worth while labor may be obtained cannot overlook this city as being one that will take care of their requirements in a satisfactory way at all times.

Common labor runs from 35¢ to 45¢ per hour, while skilled labor averages around 60¢ with 75¢ per hour as high. Skilled labor as outlined above does not refer to the building industry as this comes under another classification, of course. The labor condition in Boone can be summed up as being very satisfactory.

[illegible]SCALE $\frac{3}{4}$ INCH = 1 MILE[illegible]